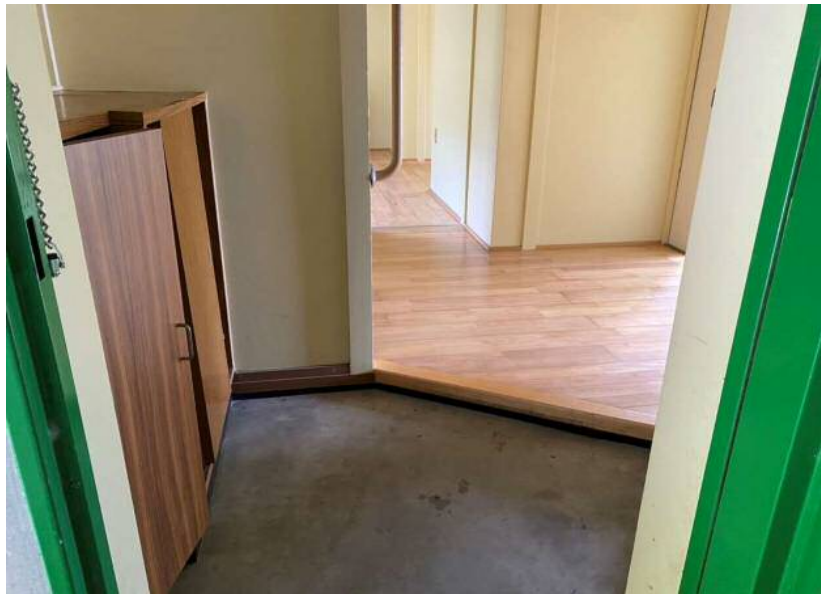


市営 原田団地



全体図



玄関



脱衣所

市営 原田団地

	<p>風呂場</p>
	<p>トイレ</p>
	<p>DK</p>

市営 原田団地

 A kitchen area featuring a stainless steel countertop with a double-basin sink and a faucet. Below the counter, there are white cabinets with one drawer and two doors open, revealing the interior. A metal shelf is mounted on the wall above the counter.	<p>キッチン</p>
 A room with light-colored wood-grain laminate flooring. A large window with a view of greenery is on the right wall. The walls are a neutral color, and there are some electrical outlets and a small hanging object on the wall.	<p>洋室</p>
 A room with tatami mat flooring. The mats are arranged in a rectangular pattern. A window is visible in the background, and the walls are a light color. The room appears to be a traditional Japanese-style living area.	<p>和室</p>

市営 原田団地

